



# The SEND Implementation and Support Team

“Ask SALI”

Supporting professionals to follow the graduated response



## Aim

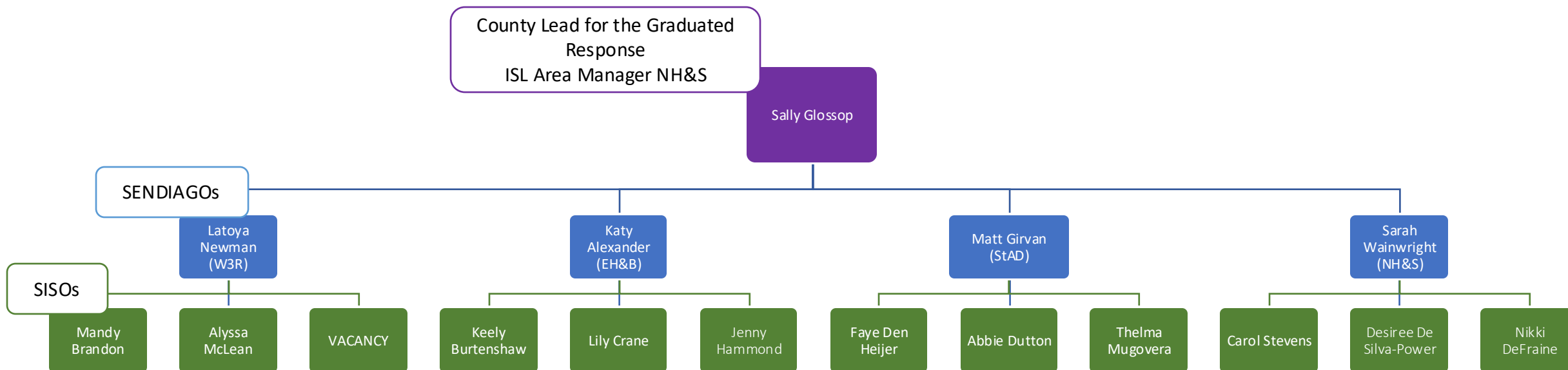
We work together with schools, SENCOs and a range of professionals to appropriately meet the needs of young people with SEND, ensuring they remain at the centre.

We want to develop good, inclusive practice, following clear pathways that include Assess, Plan, Do, Review.

This means ensuring we're working to the same purpose with a **focus on practice, not process**, and clearly defining who, what and when.



# Meet the team



# SEND Information Advice and Guidance Officers (SENDIAGOs)

- Whole-school and strategic SEND work and early intervention through the **Ask SALI phone line**.
- **Active networking** across Hertfordshire LA and with our Health and Social Care partners. We aim to be **collaborative partners**, facilitating and coordinating complex cases and developing positive relationships with families and CYP.
- Demonstrating active listening and implementing **person-centred planning processes**.
- Regular team meeting time safeguarded for reviewing cases and trends and sharing practices
- We walk beside professionals to find **solutions to more complex challenges**.



# SEND Implementation Support Officers (SISOs)

- Attend all **LMAG panels** and pick up “Not Going Ahead” cases.
- **Implementation and Support Meetings** to analyse cases (including supporting with challenging families/parents).
- Being a **‘critical friend’** to challenge SENCOs with what to try next
- **Signposting** SENCOs to specialist services, e.g. PNI Team, SLCAN Team
- Support with the implementation of **section F** and **implementation of interventions** following requests for needs assessments.
- Promote **good inclusive practice**
- Challenge schools to actively demonstrate **inclusivity**
- Ensure that schools are confident that **every teacher is a teacher of SEND and Standard 5 is embedded** in practice
- Work as a **bridge for schools and the statutory SEND service**
- **Communicate** with families **to build relationships** and support



# How to contact Ask SALI?

[The Local Offer homepage](#) > [Feedback](#) > [Improving the Local Offer...](#) > [Ask SALI](#)

## Ask SALI

asksali@hertfordshire.gov.uk

01438 843 310



Published October 2022



The SEND Advice Line for Inclusion (or 'Ask SALI', as we call it) is a new phonenumber for SENCOs and other school professionals to call, to get advice about meeting the needs of their children and young people with special educational needs and disabilities.



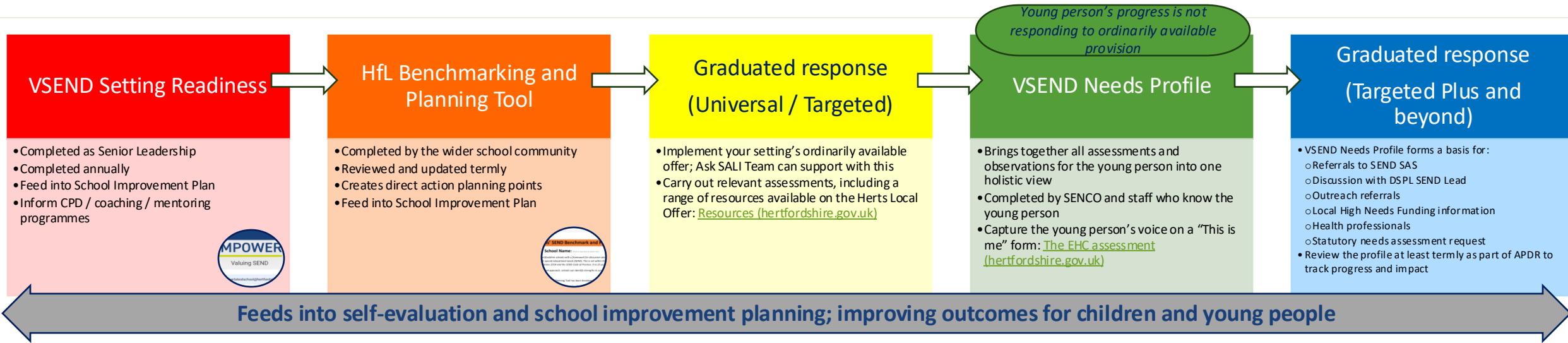
[Are you a SENCO or school professional? Get the number from The Grid >](#)



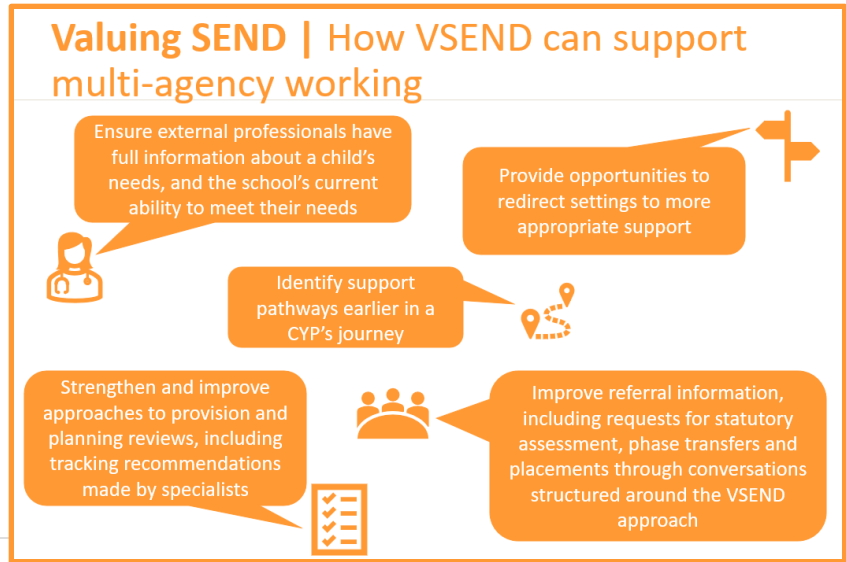
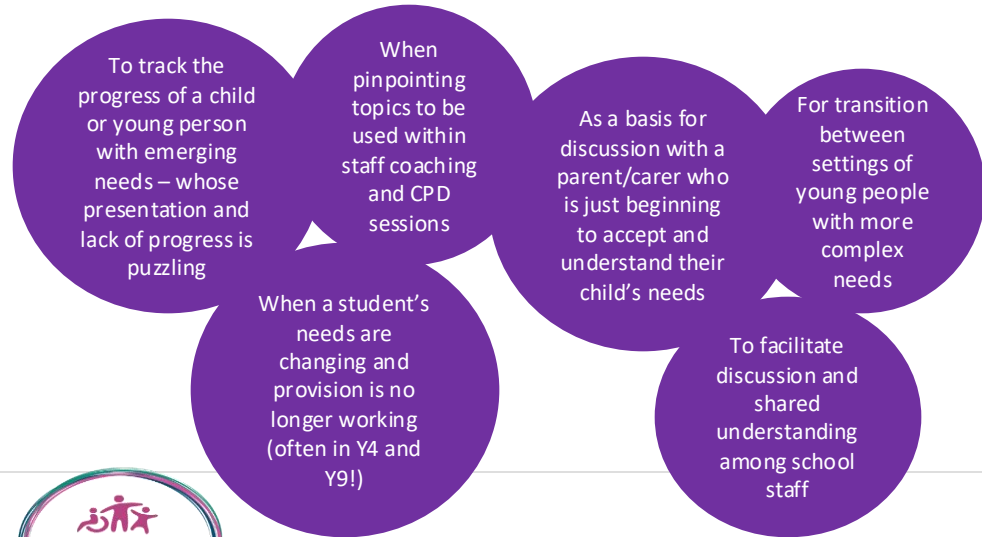
### How will Ask SALI work?

The new service will be staffed by 3 Ask SALI advisors, who bring with them a wealth of professional experience and an extensive knowledge of SEND. The advisors come from a range of different professional backgrounds, including:

*"This service will provide quick, easy access to advice and support -responding to what SENCOs have asked for"*



## When might I use VSEND?



# Any Questions?

Hertfordshire

Thank you for your time, we look forward to working collaboratively with you

