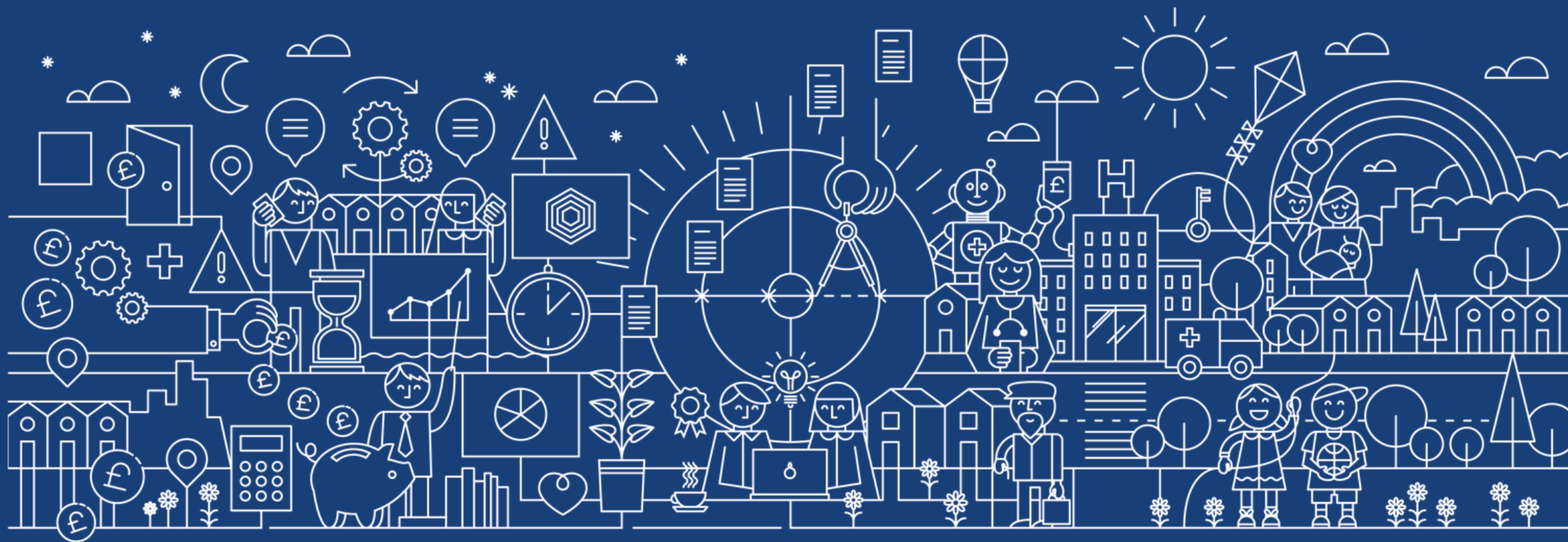
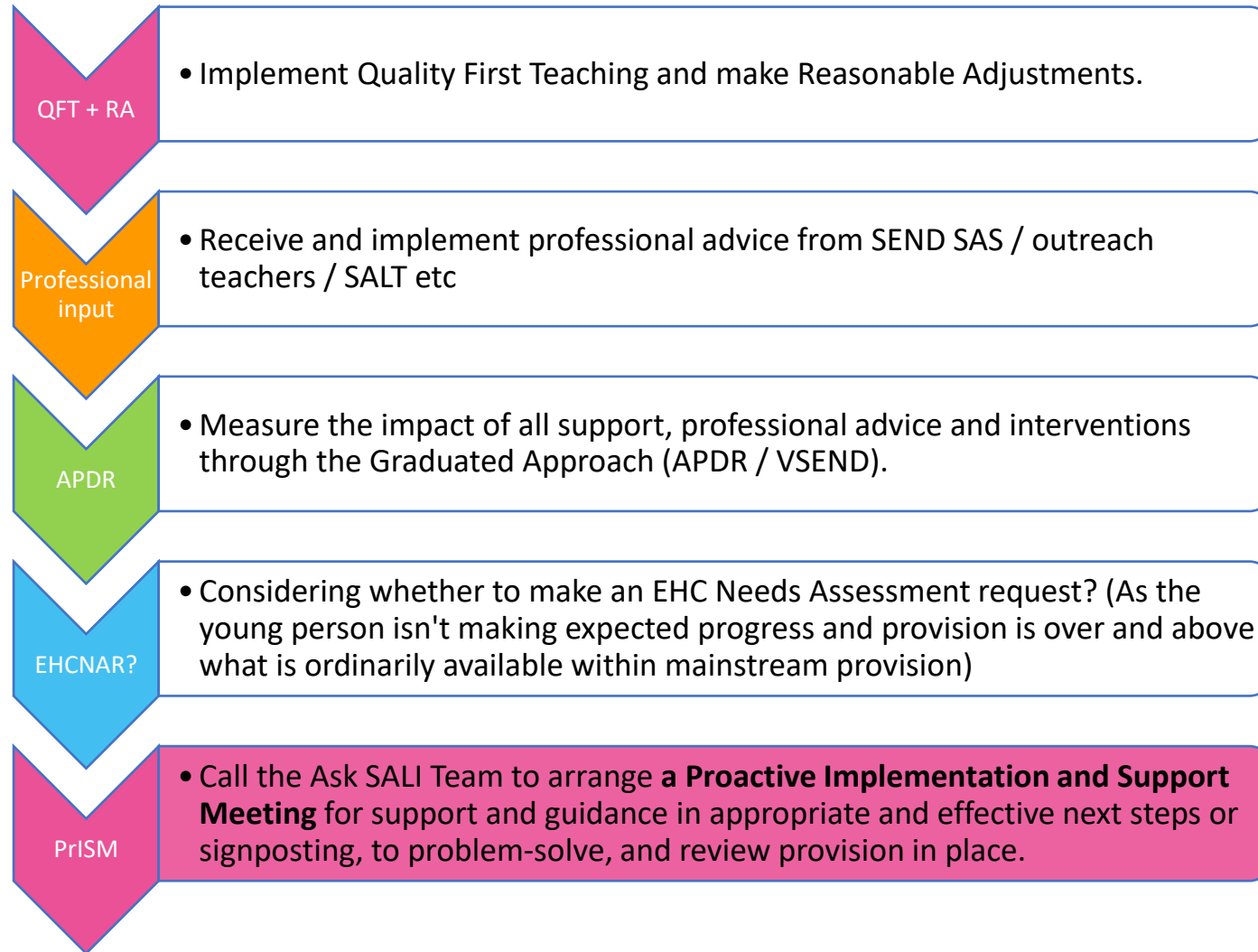


SEND Implementation Team (DSPL3/4/5)

Types of Implementation Support Meeting



Thinking of an EHC Needs Assessment...why not request a PrISM?



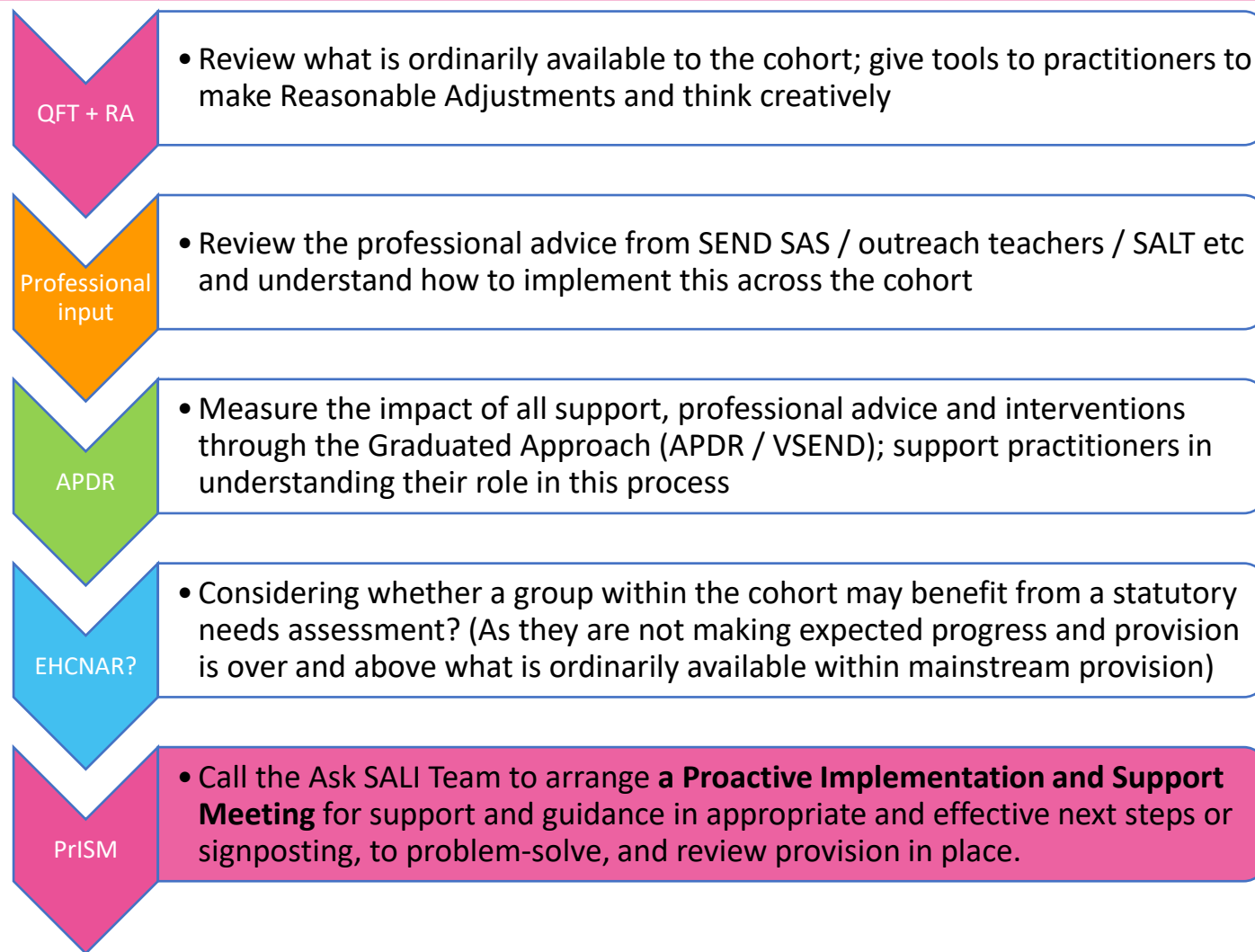
Parent wishes to request a statutory needs assessment, but you feel you are able to meet needs...?

Ask SALI can support you with these sensitive conversations.

Who to contact to request an individual Proactive Implementation and Support Meeting (PrISM)?



Need to focus on a particular cohort... why not request a cohort PrISM?

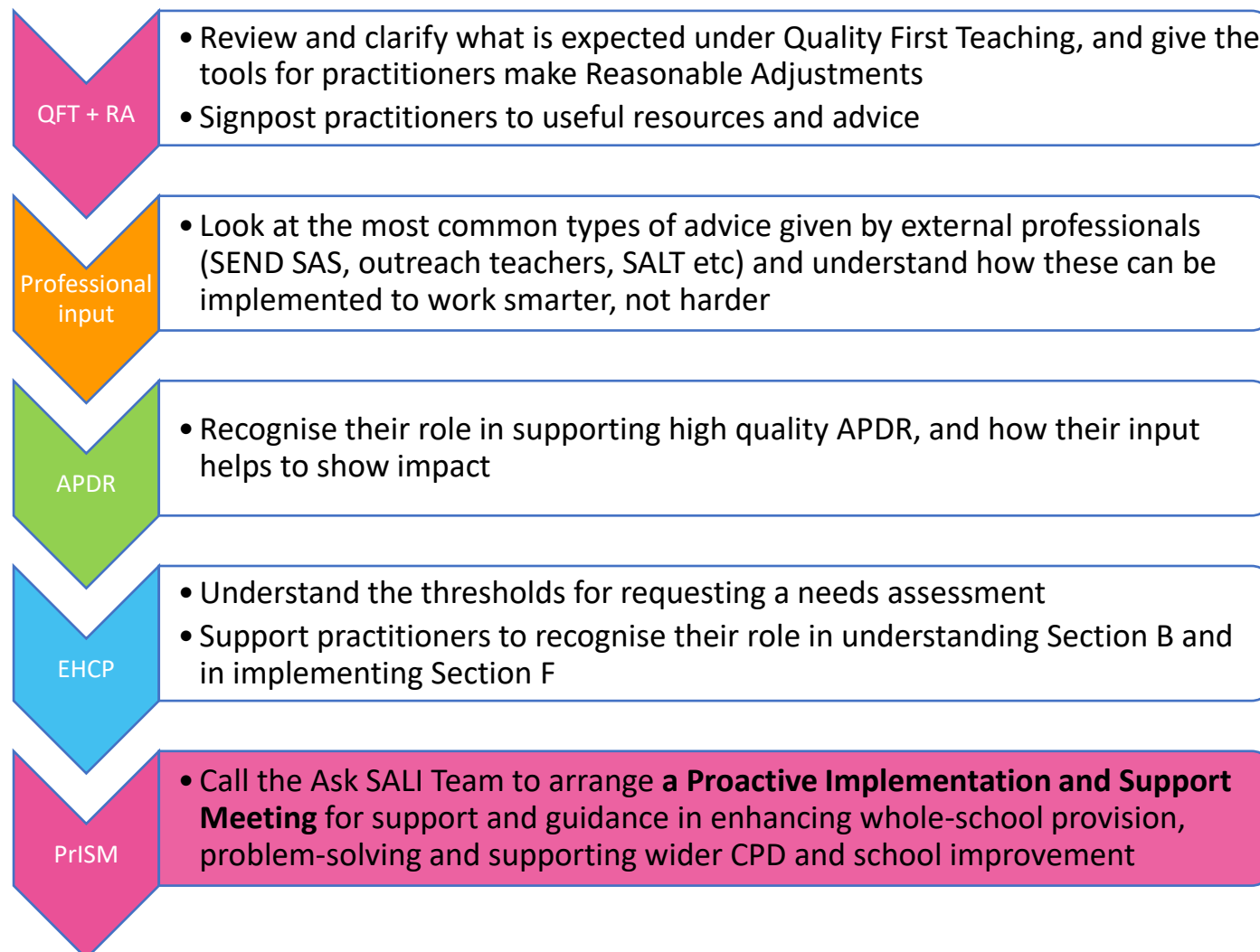


Who to contact to request a cohort Proactive Implementation and Support Meeting (PrISM)?

Keely 01438843416 / keely.burtenshaw@hertfordshire.gov.uk **Jenny** 01438843879 / jenny.hammond@hertfordshire.gov.uk **Lily** 01438845332 / lily.crane@hertfordshire.gov.uk



Reviewing best practice... why not request a whole-school PrISM?



Who to contact to request a whole-school Proactive Implementation and Support Meeting (PrISM)?



**Implementation
and Support
Meetings**



Implementation and Support Meetings

- Whole-school
- Individual
- Cohort-based

Context

Assess

What are the needs?

Plan

What provision has been planned, how is it delivered and who by?

Do

What does this look like in practice?

Review

What was the impact of previous provision?

Following & outlining where required, the legal frameworks and graduated response process

Implementation and Support Meetings

- Whole-school
- Individual
- Cohort-based

Context

Assess

What are the needs?

Plan

What provision has been planned, how is it delivered and who by?

Do

What does this look like in practice?

Review

What was the impact of previous provision?

Following & outlining where required, the legal frameworks and graduated response process

Structure

- Chaired by SEND Implementation and Support Officer (SISO)
- Offered in-person where possible

Whole school and cohort support

- Systemic support in following the Graduated Response
- Analyse and review Setting Readiness
- Attended by SISO, SENCO, SLT and other professionals

Individual support

- Analyse and review interventions
- Support with APDR
- Attended by SISO, SENCO, other professionals and parents/carers as appropriate

Implementation and Support Meetings

- Whole-school
- Individual
- Cohort-based

Context

Assess

What are the needs?

Plan

What provision has been planned, how is it delivered and who by?

Do

What does this look like in practice?

Review

What was the impact of previous provision?

Following & outlining where required, the legal frameworks and graduated response process

Structure

- Chaired by SEND Implementation and Support Officer (SISO)
- Offered in-person where possible

Whole school and cohort support

- Systemic support in following the Graduated Response
- Analyse and review Setting Readiness
- Attended by SISO, SENCO, SLT and other professionals

Individual support

- Analyse and review interventions
- Support with APDR
- Attended by SISO, SENCO, other professionals and parents/carers as appropriate

Outcomes

Parent, young person and school feel listened to and supported

Collaboratively-produced provision plan in place to assess and meet needs of young person, following the graduated response structure

Additional services are signposted and engaged

Relationships built and continue to be nurtured

A review date is set

Implementation and Support Meetings

- Whole-school
- Individual
- Cohort-based

Context

Assess

What are the needs?

Plan

What provision has been planned, how is it delivered and who by?

Do

What does this look like in practice?

Review

What was the impact of previous provision?

Following & outlining where required, the legal frameworks and graduated response process

Structure

- Chaired by SEND Implementation and Support Officer (SISO)
- Offered in-person where possible

Whole school and cohort support

- Systemic support in following the Graduated Response
- Analyse and review Setting Readiness
- Attended by SISO, SENCO, SLT and other professionals

Individual support

- Analyse and review interventions
- Support with APDR
- Attended by SISO, SENCO, other professionals and parents/carers as appropriate

Outcomes

Parent, child / young person and school feel listened to and supported

Collaboratively produced provision plan in place to assess and meet needs of child / young person, following the graduated response structure

Additional services are signposted and engaged

Relationships built and continue to be nurtured

A review date is set

Contact

If you are interested, please contact us on the details below:

SENDIAGO: Katy



katy.alexander@hertfordshire.gov.uk



01438 844 091

SISO: Keely



keely.burtenshaw@hertfordshire.gov.uk



01438 843 416

SISO: Jenny



jenny.hammond@hertfordshire.gov.uk



01438 843 879

SISO: Lily



lily.crane@hertfordshire.gov.uk



01438 845 332

SEND Implementation and Support Team

Core visits

- Update
- Enhance
- Collaborate

The Ask SALI Team continues their commitment to *right support, right place, right time.*

We now have 2 years' experience as a team and are keen to take what we have learned about our areas to support SENCOs in an efficient, systemic way.



SEND Implementation and Support Team

Core visits

- Update
- Enhance
- Collaborate

The Ask SALI Team continues their commitment to *right support, right place, right time.*

We now have 2 years' experience as a team and are keen to take what we have learned about our areas to support SENCOs in an efficient, systemic way.



Update

- Every setting will see a SEND Implementation and Support Officer (SISO)
- SISO provides updates to SENCOs
- Provide a focus on trends across the local area where needed

SEND Implementation and Support Team

Core visits

- Update
- Enhance
- Collaborate

The Ask SALI Team continues their commitment to *right support, right place, right time.*

We now have 2 years' experience as a team and are keen to take what we have learned about our areas to support SENCOs in an efficient, systemic way.



Update

- Every setting will see a SEND Implementation and Support Officer (SISO)
- SISO provides updates to SENCOs
- Provide a focus on trends across the local area where needed

Enhance

- Discuss requirements, e.g. analyse VSEND Setting Readiness together
- SISO provides resources to enhance where there are gaps in knowledge
- Signpost to training, courses and networks

SEND Implementation and Support Team

Core visits

- Update
- Enhance
- Collaborate

The Ask SALI Team continues their commitment to *right support, right place, right time.*

We now have 2 years' experience as a team and are keen to take what we have learned about our areas to support SENCOs in an efficient, systemic way.



Update

- Every setting will see a SEND Implementation and Support Officer (SISO)
- SISO provides updates to SENCOs
- Provide a focus on trends across the local area where needed

Enhance

- Discuss requirements, e.g. analyse VSEND Setting Readiness together
- SISO provides resources to enhance where there are gaps in knowledge
- Signpost to training, courses and networks

Collaborate

- Problem-solve and find pathways forward for unnamed individuals and cohorts
- Discuss potential collaborative meetings on tricky cases
- Increase professional networking

SEND Implementation and Support Team

Core visits

- Update
- Enhance
- Collaborate

The Ask SALI Team continues their commitment to *right support, right place, right time.*

We now have 2 years' experience as a team and are keen to take what we have learned about our areas to support SENCOs in an efficient, systemic way.



Update

- Every setting will see a SEND Implementation and Support Officer (SISO)
- SISO provides updates to SENCOs
- Provide a focus on trends across the local area where needed

Enhance

- Discuss requirements, e.g. analyse VSEND Setting Readiness together
- SISO provides resources to enhance where there are gaps in knowledge
- Signpost to training, courses and networks

Collaborate

- Problem-solve and find pathways forward for unnamed individuals and cohorts
- Discuss potential collaborative meetings on tricky cases
- Increase professional networking

Contact

Please contact us on the details below:

SENDIAGO: Katy



katy.alexander@hertfordshire.gov.uk



01438 844 091

SISO: Keely



keely.burtenshaw@hertfordshire.gov.uk



01438 843 416

SISO: Jenny



jenny.hammond@hertfordshire.gov.uk



01438 843 879

SISO: Lily



lily.crane@hertfordshire.gov.uk



01438 845 332